

**OUTPUT OR MODULATOR
TRIODE**

MZ05-60

GENERAL

Type MZ05-60 is a power triode capable of dissipating 60 watts at the anode and suitable for use as an output valve in low frequency amplifiers or as a modulator in transmitting equipment.

FILAMENT

Oxide coated, suitable for operation on A.C. or D.C. supply.

V_f	6.0	V
I_f	1.7	A
Total Emission	1.0	A

CHARACTERISTICS At $V_a=500$ V $I_a=120$ mA

g_m	3.2	mA/V
μ	3	
r_a	940	Ω

CAPACITANCES

C_{out}	3.5	$\mu\mu F$
C_{in}	5.5	$\mu\mu F$
C_{a-g}	9.5	$\mu\mu F$

LIMITING VALUES

V_a max.	650	V
p_a max.	60	W

OPERATING CONDITIONS—AS SINGLE CLASS A AMPLIFIER

V_a	500	V
V_g	-120	V
I_a	120	mA
V_{in} (r. m. s.)	85	V
p_a	60	W
p_{out} ($D_{tot}=5\%$)	11	W
R_a	2,000	Ω



MZ05-60

OUTPUT OR MODULATOR TRIODE

OPERATING CONDITIONS—TWO VALVES AS CLASS AB₁ AMPLIFIER

V_a	650	650	V
V_g	-195	-195	V
I_a	2×82.5	2×115	mA
V_{in} (r.m.s.)	0	2×138	V
P_a	2×53.5	2×55	W
P_{out} ($D_{tot}=5\%$)	—	40	W
R_{a-a}	7,500	7,500	Ω

OPERATING CONDITIONS—TWO VALVES AS CLASS AB₂ AMPLIFIER

V_a	600	600	V
V_g	-180	-180	V
I_a	2×65	2×112	mA
I_g	—	2×16	mA
P_a	2×39	2×34	W
P_{out} ($D_{tot}=6\%$)	—	66	W
R_{a-a}	8,000	8,000	Ω

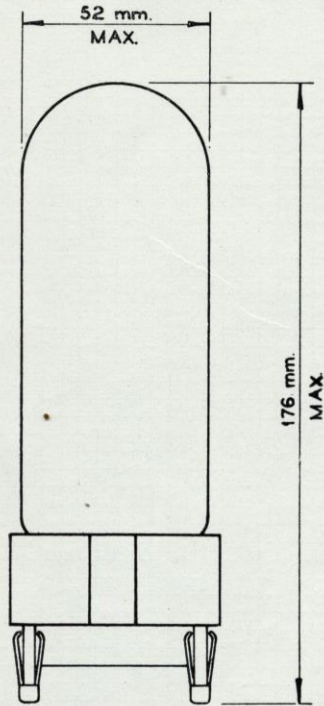
PUSH-PULL DRIVER STAGE USING TWO DO.24 TRIODES

V_a	500	V
V_g	-48	V
I_a	2×50	mA
V_{in} (r.m.s.)	2×208	V

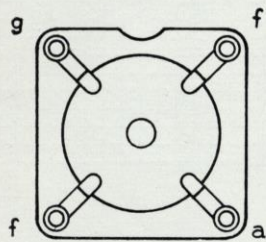
OUTPUT OR MODULATOR
TRIODE

MZ05-60

DIMENSIONS AND BASE CONNECTIONS



4-pin Base to fit MHV.1 Holder
(Available from the Mullard Wireless Service Co., Ltd.)



WEIGHTS

Valve only	8oz.
Valve and carton	3lb 6oz.



MZ05-60

OUTPUT OR MODULATOR TRIODE

